

The Global Research Platform, StarLight Software Defined Exchange (SDX), SC24 NREs

Joe Mambretti, Director, (j-mambretti@northwestern.edu)

International Center for Advanced Internet Research (www.icaair.org)

Northwestern University

Director, Metropolitan Research and Education Network (www.mren.org)

Director, StarLight International/National Communications Exchange Facility

(www.startap.net/starlight),

PI: StarLight SDX, Co-PI Chameleon, PI-iGENI, PI-OMNINet

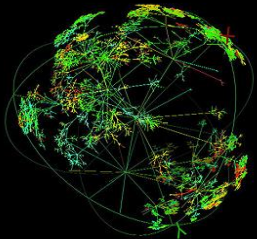
iCAIR, Northwestern University, StarLight/MREN

IEEE/ACM International Conference on High Performance Computing,

Networking, Storage, and Analytics

Atlanta, Georgia

November 17-21, 2024



The GRP: A Platform For Global Science



GLOBAL RESEARCH PLATFORM

*A Next Generation, Software Defined,
Globally Distributed, Multi-Domain
Computational Science Environment*

Next Generation eScience Ecosystem

STARLIGHTSM

Selected Applications/Instruments



GENI
www.geni.net



Open Storage Network
www.openstorage.network.org



OSG
www.openscience.grid.org



Polar Geospatial Center
www.pgc.umn.edu



LSST
www.lsst.org



ISS
www.nasa.gov/station



Virgo
www.virgo-gw.eu



LHC
home.cern/science/accelerators/large-hadron-collider



GLEON
www.gleon.org



OSIRIS
www.osris.org



GRP
theglobalresearchplatform.net/



IceCube
icecube.wisc.edu



Pierre Auger Observatory
www.auger.org



SKA
www.skatelescope.org



LIGO
www.ligo.caltech.edu



USGS EROS
www.usgs.gov/centers/eros



Blue Waters
bluewaters.ncsa.illinois.edu



PRP
pacificresearchplatform.org



Chameleon
www.chameleoncloud.org



Belle II
www.belle2.org



XENON
xenon.astro.columbia.edu



SDSS
www.sdss.org

LHCONE
twiki.cern.ch/twiki/bin/view/LHCONE/WebHome



NEON
www.neonscience.org



PRAGMA
www.pragma-grid.net



CHASE-CI
www.calit2.net/newsroom/article.php?id=2910



Jetstream
www.jetstream-cloud.org



LBNF/DUNE/ProtoDUNE
lbnf.fnal.gov



NOVA
novaexperiment.fnal.gov



ALMA
www.almaobservatory.org



LHCOPN
twiki.cern.ch/twiki/bin/view/LHCOPN/WebHome



CENTRA
www.globalcentra.org



SAGE2
sage2.sagecommons.org



Genomic Science Program
genomicscience.energy.gov

Next Generation Research Platforms (Data Science Ecosystems)

- US National Research Platform
- Asia Pacific Research Platform
- Korean Research Platform
- EU SLICES
- Worldwide LHC Computing Grid (WLCG)
- DOE Integrated Research Infrastructure (IRI)
- Open Science Grid
- Open Science Data Grid
- Major Instrumentation Sites
- Et Al



Major Service, Architecture, Technology Themes

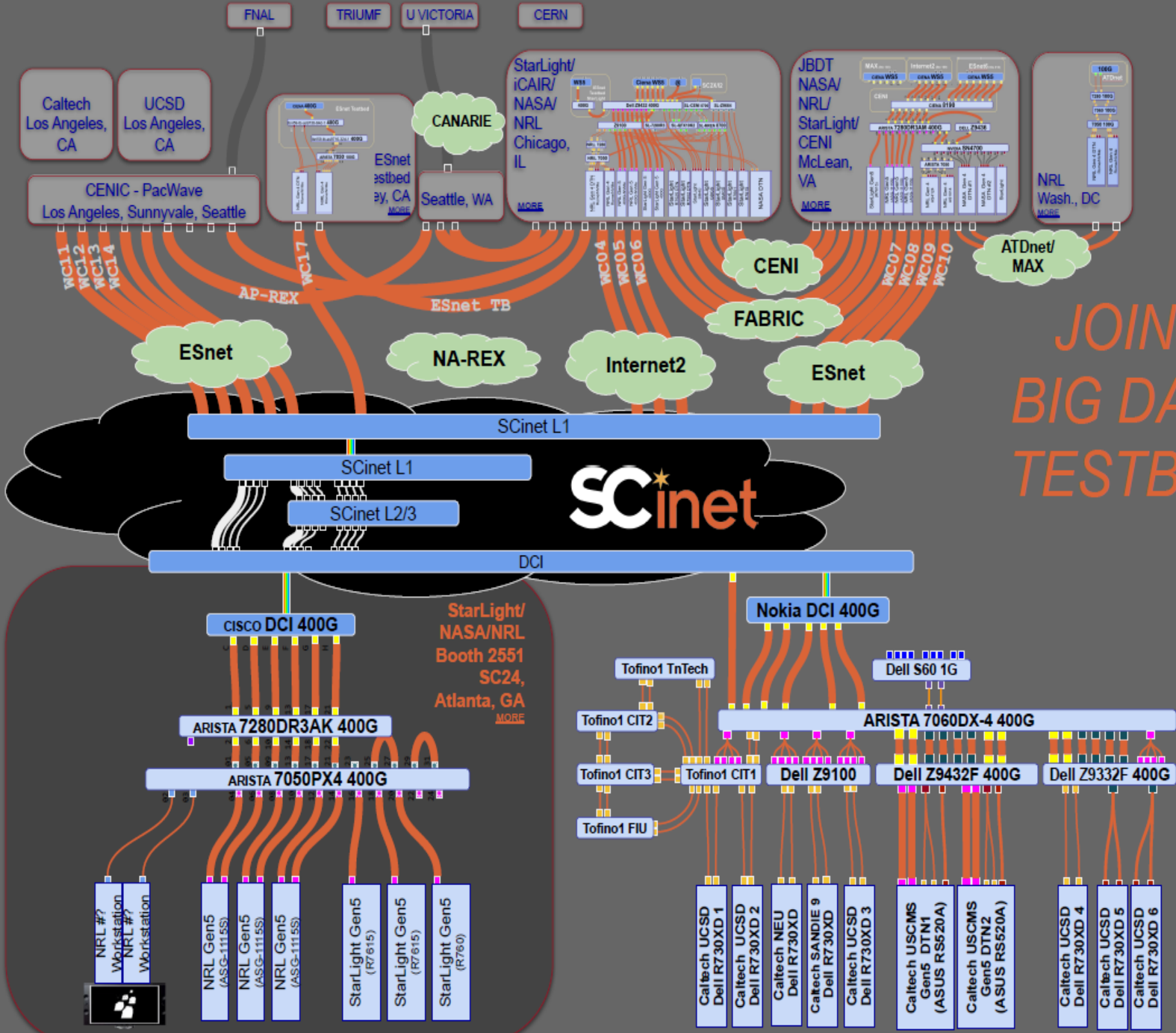
- **Orchestration Among Multiple Domains**
- **Large Scale High Capacity WAN Services**
- **High-Fidelity Data Flow Monitoring, Visualization, Analytics, Diagnostic Algorithms, Event Correlation AI/ML/DL**
- **International Testbeds for Data-Intensive Science**
- **Persistent Specialized Platforms and Facilities (e.g., High Performance Networks, Open Exchange Points)**





SC24
Atlanta, GA hpc creates.

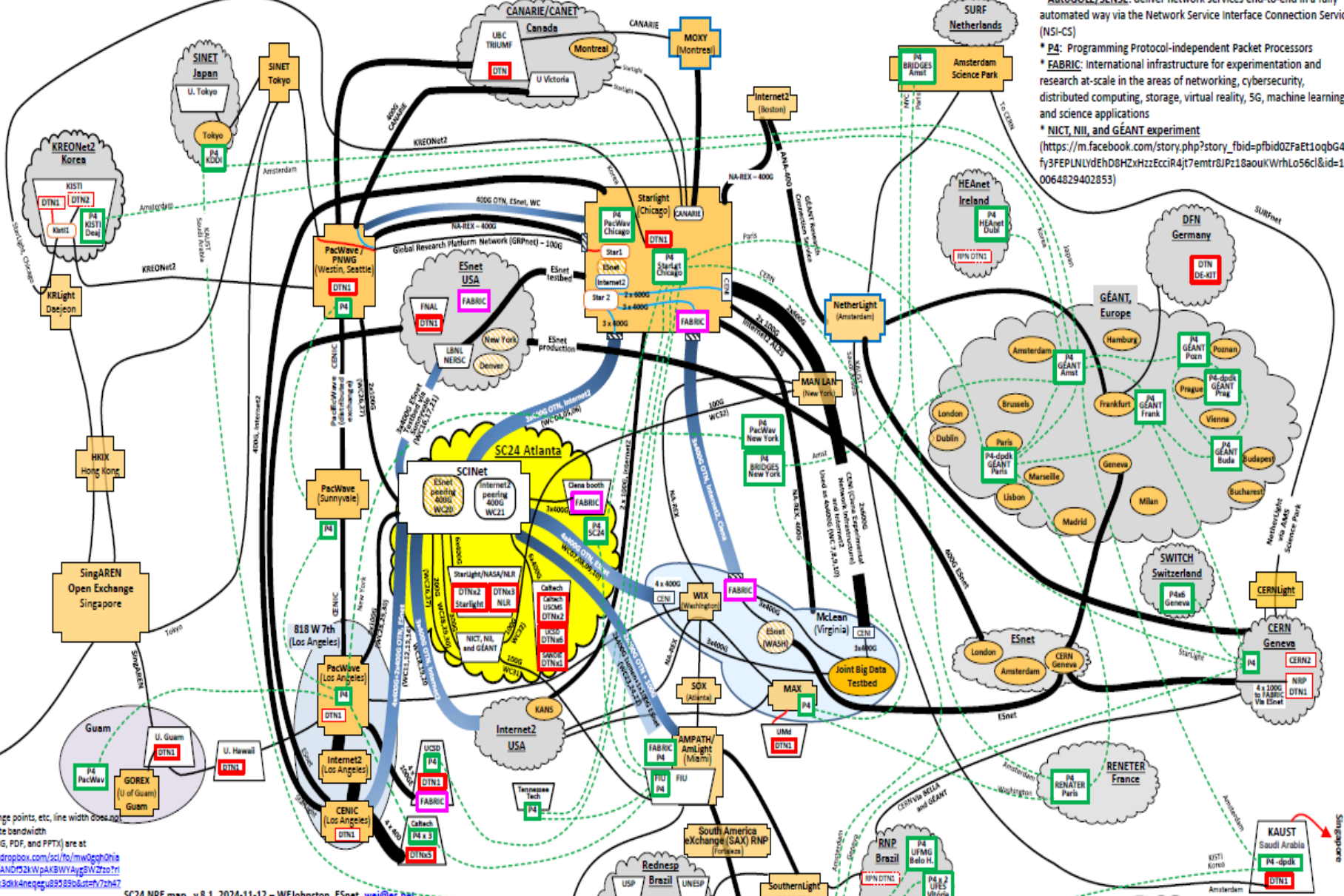
JOINT BIG DATA TESTBED



28 October 2024
 Latest Version at:
<https://tinyurl.com/SC24-JBDT>
 To request changes, please leave a comment
[SC24 floorplan](#)

SC24 Network Research Exhibitions: SciTags, AutoGOLE / SENSE, P4, FABRIC, and Other Research Testbeds

- SciTags:** packet marking and flow labelling
- AutoGOLE/SENSE:** deliver network services end-to-end in a fully automated way via the Network Service Interface Connection Service (NSI-CS)
- P4:** Programming Protocol-independent Packet Processors
- FABRIC:** International infrastructure for experimentation and research at-scale in the areas of networking, cybersecurity, distributed computing, storage, virtual reality, 5G, machine learning, and science applications
- NICT, NII, and GÉANT experiment**
(https://m.facebook.com/story.php?story_fbid=pfbid02FaEt1oqgAFfy3FEP1NLYdEhD8HzHxzEccir4j7emtrdJPz18aouKWrhLo56c&id=100064829402853)



NOTES
 1) Within exchange points, etc., line width does not usually indicate bandwidth
 2) Map files (JPEG, PDF, and PPTX) are at <https://www.dropbox.com/scl/fo/mw0gq0h1e2914k4nq0/ANDP32kVpAKBWWyAg5WZfo7n1key?st=U846q6vK3dM4neqg4893506stf7z4738&dl=0>

SC24 NRE map v.8.1, 2024-11-12 – WJJohnston, ESnet, wej@cs.net

FABRIC	FABRIC infrastructure is in purple	AutoGOLE/SENSE	AutoGOLE / SENSE infrastructure is in red	P4	P4 infrastructure is in green	general	Shared or general infrastructure is in black
	ESnet PoPs with High-Touch (line-rate, per packet) monitoring		Shared circuits supporting demonstrations		Circuits supporting AutoGOLE / SENSE		Regional/national networks. Internal connectivity is assumed to be 10/10/k, full mesh.
	Carrier hotels, etc		100G		200G		400G
	Ovals are points of presence in regional infrastructure		800G		1 Tb/s		1 Tb/s
	Rounded rectangles are individual switch/router		1 Tb/s		1 Tb/s		1 Tb/s
	Sites		1 Tb/s		1 Tb/s		1 Tb/s
	Exchange points (external or internal to a site)		1 Tb/s		1 Tb/s		1 Tb/s
	SOX (Atlanta)		1 Tb/s		1 Tb/s		1 Tb/s
	SCINet managed		1 Tb/s		1 Tb/s		1 Tb/s

KAUST Saudi Arabia

Example SC24 SCinet Network Research Exhibitions

- **Global Research Platform (GRP)**
- **SDX 1.2 Tbps WAN Services**
- **SDX E2E 400 Gbps 800 Gbps WAN Services**
- **400 Gbps DTNs & Smart NICs**
- **Orchestration With Packet Marking (SciTags)**
- **ESnet High Touch Network Measurements**
- **NA REX Continental Backbone For Data Intensive Science**
- **SDX International Testbed Integration**
- **StarLight SDX for Petascale Science**
- **DTN-as-a-Service For Data Intensive Science With Scitags**
- **P4 Integration With Kubernetes, P4 Global Lab**
- **NASA Goddard Space Flight Center HP WAN Transport Services (400 G Dsk-Dsk)**
- **Resilient Distributed Processing & Rapid Data Transfer**
- **AutoGOLE/SENSE E2E Orchestration Net Services And Workflow Integration**
- **Open Science Grid Demonstrations**
- **National Research Platform Demonstrations**
- **Chameleon FABRIC/FAB Integration**
- **SciStream Multi Site Data Streaming Orchestration**
- **Distributed Pipelines Over WANs For On-Line Data Analysis**
- **DTNs for Research Enhanced Environments (ONION-RED ONION)**
- **Distributed Hybrid Quantum Computing With PQC/QKD Secured Links**

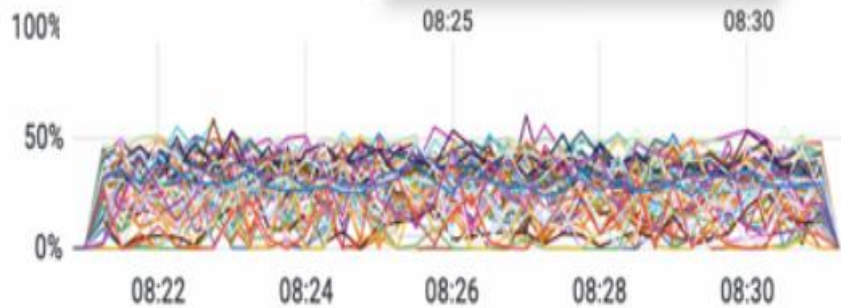
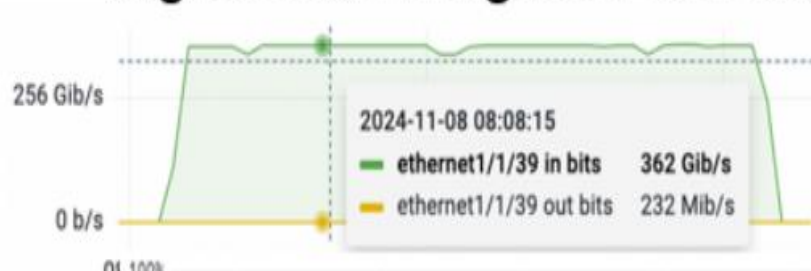
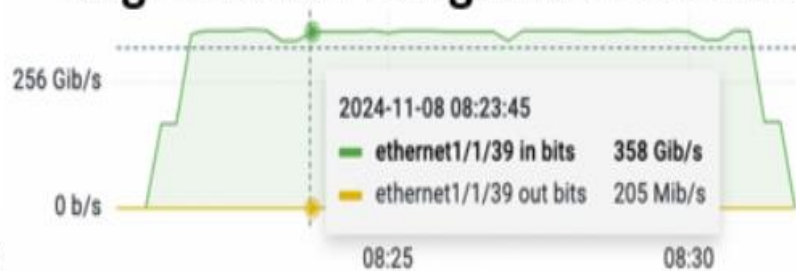
StarLight DTN 400G TCP WAN Service Prototypes

25 TCP streams between SL IntelG5 and SL AMDG5 Servers

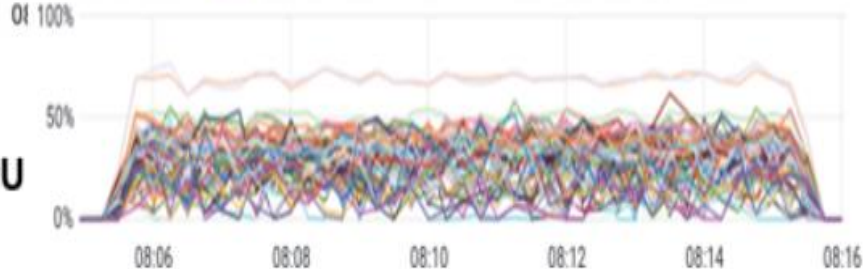
Nov 8 2024 Test Results

L.A. loop (NA-REX) RTT 89.6 ms
Avg: 378Gb/s Range: 376-382 Gb/s

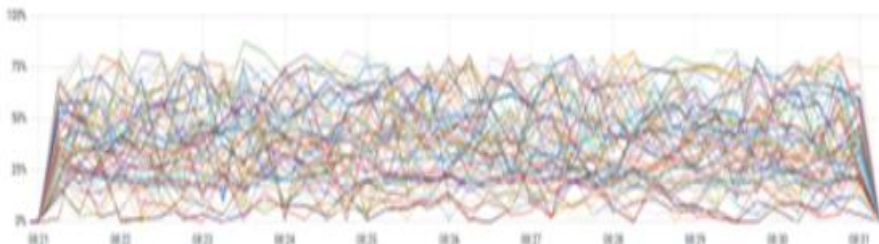
McLean loop (CENI) RTT 27.8 ms
Avg: 386Gb/s Range: 381-391 Gb/s



Intel G5 CPU
NUMA 0



AMD G5
CPU



StarLight Science Data Exchange Service Prototypes

GEN3

<https://gen3.org/>

- Gen3 is a **data platform** for building **data commons and data ecosystems**. It consists of several **open-source software services**.
- It support the **healthy data ecosystems** by enabling the interoperation and creation of **cloud-based data resources**, including data commons and analysis workspaces.
- *Powered by CTDS, University of Chicago*
– <http://ctds.uchicago.edu>
- **Apache-2.0 license**

scitags

<https://scitags.org/>

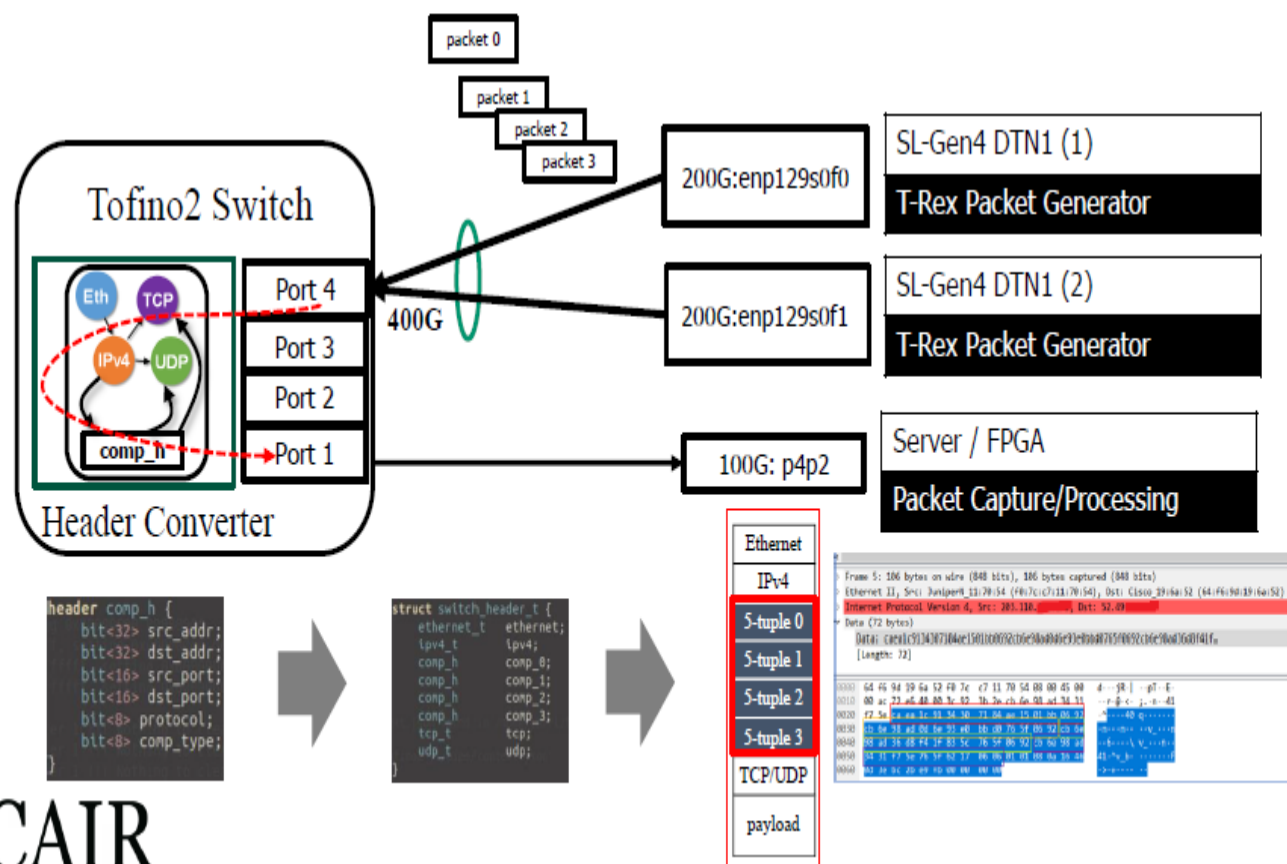
- **Scientific network tags (scitags)** is an initiative promoting identification of the **science domains and their high-level activities at the network level**.
- It provides an open system using open-source technologies that helps *Research and Education (R&E) providers* in understanding how their networks are being utilized while at the same time providing feedback to the *scientific community* on what network flows and patterns are critical for their computing.
- The initiative offers an **open collaboration on the research and development of the packet and flow marking prototypes** and works in close collaboration with the scientific storage and transfer providers to enable the marking capability.

StarLight 400G Real-Time Packet Processing Prototype

400G-100G Packet Header Processor Over WAN With Tofino2 + FPGA

Yu-Kuen Lai, Miura Hideyoshi*, Yi-Siang Lin, Yu-Jui Chang, Kouji Hirata
 Department of Electrical Engineering, Chung-Yuan Christian University,
 Chungli, Taiwan
 *Graduate School of Science and Engineering, Kansai University, Japan

Jim Hao Chen, Joe Mambretti
 International Center for Advanced Internet Research
 Northwestern University, USA



***Annual Global Research Platform Workshop – Co-Located With
IEEE International Conference On eScience Sept 16-17, 2024***



Other GRP Events

- **GRP Demonstrations, IEEE/ACM International Conference on High Performance Computing, Networking, Storage and Analytics, Atlanta, Georgia, November 2024**
- **Mini-Global Research Platform Workshop, Co-Located With the Supercomputing Asia Conference, Singapore, March, 2025**
- **GRP Demonstrations, OFCnet, OFC Conference, San Francisco, California, March 2024**
- **Global Research Platform Workshop, Co-Located With IEEE International Conference on eScience, Chicago, Illinois, September, 2025**



**Please Visit StarLight Booth 2551
(Near SCinet NOC)
Note Presentations In SCinet Theater**



www.startup.net/starlight

Thanks to the NSF, DOE, NASA,
NIH, DARPA
Universities, National Labs,
International & Industrial
Partners,
and Other Supporters

STARLIGHTSM